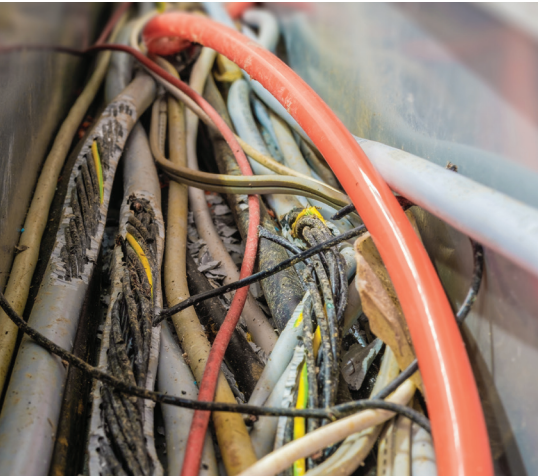


# Rentokil

Ehrlich | Presto-X | Western



## Rodent management checklist for construction

Rodent activity can have a negative impact on any business. In addition to posing serious health risks to your workers by contaminating every surface they come in contact with, rodents can cause costly damage, gnawing through drywall, insulation, wiring, and product.

Take an active role in rodent control and keep your construction sites rodent-free. **Get started today with our helpful checklist.**

### Daily Tasks

- Pick up any food and food packaging and place it into a rodent-resistant lined trash container.
- Inspect temporary walls, doors, and other barriers to ensure they are sufficiently closed and there are no gaps greater than ¼ inch (6 mm).
- Check piles of construction waste for signs of rodents such as droppings and gnawed materials. If they are found, alert your pest management professional.
- Sweep up debris and dispose of it in an appropriate container.
- Reduce standing water as much as possible.
- Ensure doors are closed when not in use.
- Do not leave food out overnight. Put all food away in secure containers.
- Close dumpster lids when not in use. Ensure food and food packaging are not disposed of in open top containers, but rather in bags in a dumpster with a tight fitting lid.
- Ensure that pest control devices are accessible to pest technicians. If devices need to be temporarily relocated, notify the technician where they are being stored.
- Empty all garbage cans at the end of the day.
- Place all trash in bags in a sealed dumpster at the end of the day.



### Weekly Tasks

- In addition to the daily tasks, check behind and under items that have been stored at the site more than a few days for signs of rodents. Look for damaged materials, rodent droppings, rub marks, signs of burrows, and holes in walls that need repair. If they are found, alert your pest management professional.
- Thoroughly clean break room areas and ensure all cigarette butts are picked up and disposed of in an appropriate container.
- Clean areas with signs of rodent activity after pest management has seen the evidence, then monitor it weekly for signs of new activity.

### Post-construction final check

- Ensure all trash and food waste is picked up and properly disposed of in appropriate containers.
- When materials are loaded up for removal from the site, check these areas for signs of rodents.
- Inspect all items remaining at the site for signs of rodents.

- Along with the previously mentioned items, inspect areas such as electrical closets, dumpster corrals, or other areas that are not cleaned frequently and take a look at the enclosures for signs of rodents.
- If any signs of rodents are found, alert your pest management professional.
- Ensure that pest control devices are accessible to pest technicians including those devices moved during construction.



A rodent's incisor teeth never stop growing. To wear them down, they engage in a behavior called bruxing (rubbing their upper teeth against their lower teeth and vice versa). This creates a sharp, beveled edge, allowing them to easily gnaw through wiring, building materials, and product.



**Your Rentokil Pest Technician can often provide minor repair and rodent proofing services for an additional charge. Ask your Technician for more information.**