

# Termites Menace

## Where are they found

- Door or window frame.
- Parquet or wooden floor.
- Baseboard & skirting.
- Wooden cabinets.
- Roof or ceiling.
- Bathroom area.

## What

### Termites

- Related to cockroaches.
- Social insects in a colony.
- Found in rotting wood, dry wood, or in the soil.
- Eat and damage wood.
- Very small (soldiers & workers).
- Love moist and warm environment.

## Where

## When they attack

- All year round.
- Rainy season.
- High humidity.

## When

## Financial Damage

Termites bring property and furniture damage:

- Hundreds of dollars per cabinet.
- Huge financial damage if the house needs rebuilding or massive repairs.



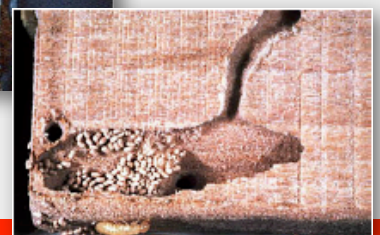
## Warning signs

- Damaged wood with hollowed-out passages.
- Some parts of wood sounds hollow when tapped with a screwdriver.
- Pile of shed wings in the evening after the rain.
- Mud-like tubes on walls (mixture of soil, and the saliva and faeces of termites).
- Small brown 6-sided pellets (faeces of termites).

## HOW

## Basic HOW-to (ERDM)

- **EXCLUSION** - Prevent termites from setting foot by keeping doors and windows closed during rainy season.
- **RESTRICTION** - Place large furniture (e.g. Cabinets) away from walls and the floor.
- **DESTRUCTION** - Use bait, termiticide and fumigation.
- **MONITORING** - Periodic inspection and housekeeping on furniture, flooring and soil.



## More